

Bronto Skylift S-XR





Get where you need to be

We believe in continuous improvements and are always aiming higher in our mission to provide the best solution for professionals working at heights. The XR range is a great example of our customer-oriented product development as it is designed by the operators for the operators.

Quite simply, our XR range machines do more for less. They reach higher and further, reduce operational costs and increase productivity. They have less weight and lower fuel consumption, as well as larger working envelope per gross vehicle weight tonne. And as always, your safety is of paramount importance. With Bronto Skylift platforms you can get where you need to be, and return home safely.

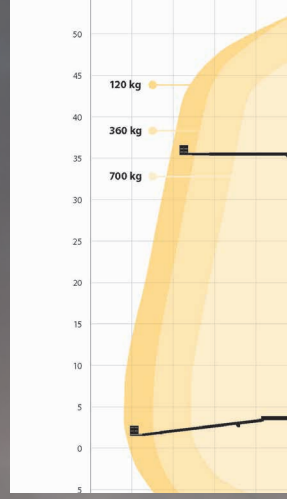
XR key features

- Working height up to 47 or 70 metres (depending on model)
- Working outreach up to 41 metres
- Larger work envelope for maximum productivity
- Optimised transportation dimensions and weight
- Reduced cost of ownership
- Easy to use and precise Bronto+ control system
- Lifetime support to maintain high resale value





Extremely reliable outreach. You always know how far you can reach; this is not affected by external circumstances.



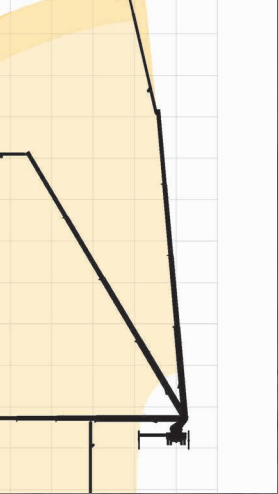
Larger working area, improved productivity.



The Sky-Jib with automatic and manual operation provide additional flexibility.



Various options from different cages and material handling devices to power outlets in the cage.



g envelope for
activity



Optimised transport
dimensions for easy
manoeuvrability on the road.

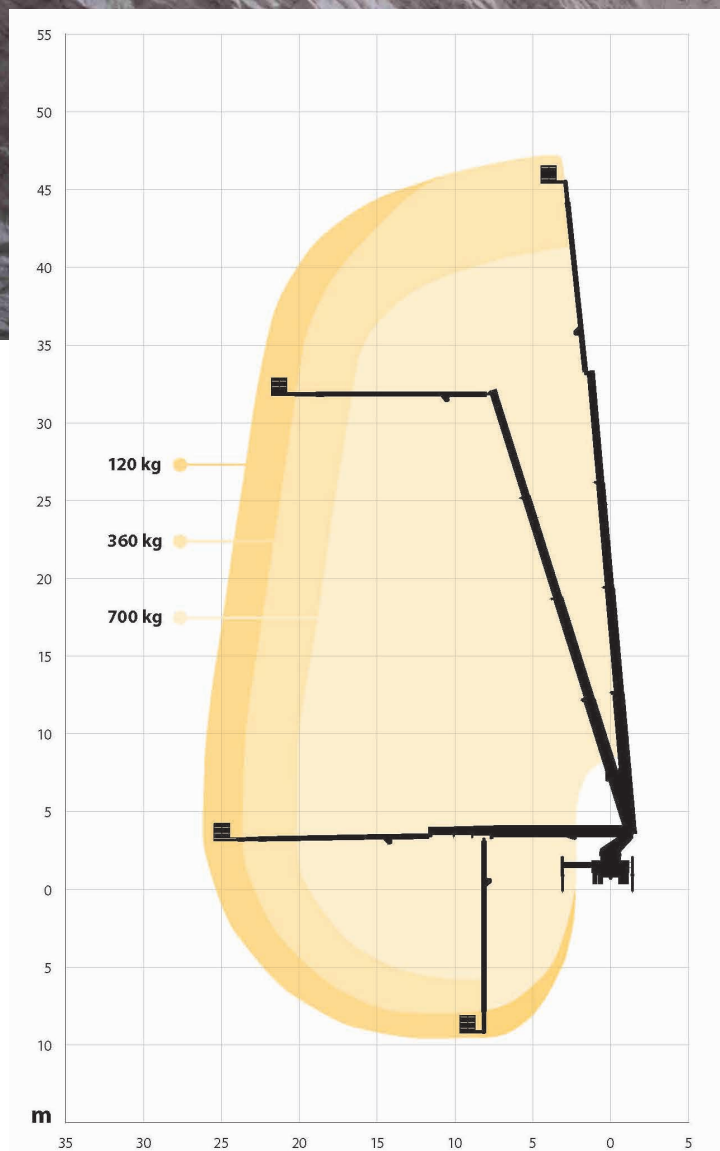
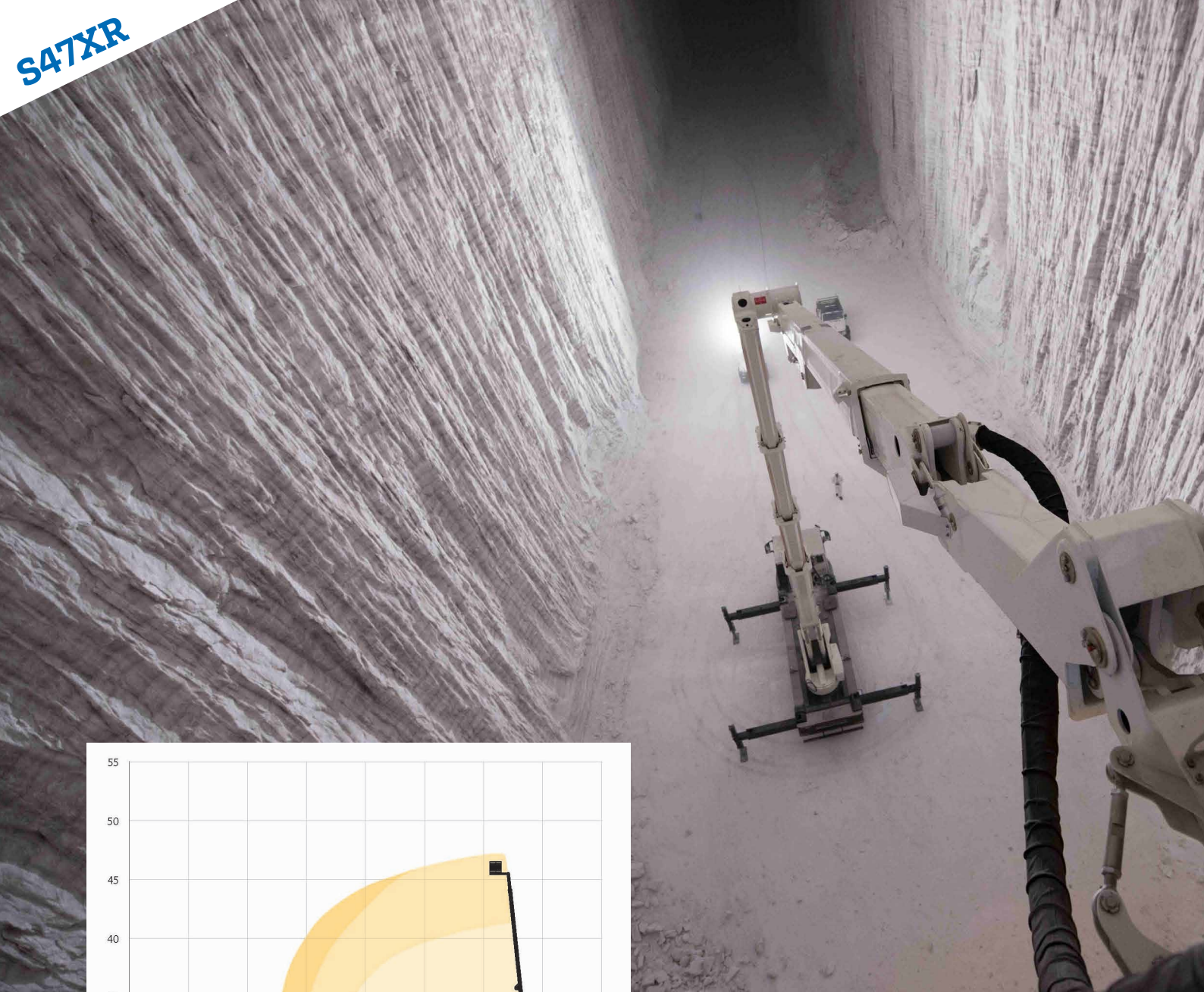


Fully variable jacking and fast
automatic levelling. You get up
in the air within minutes.

Modern service tools and a wide
service network to guarantee
the best possible uptime.



S47XR



Diagrams presented with standard cage. Variations apply.

* depending on chassis



47 m



26 m



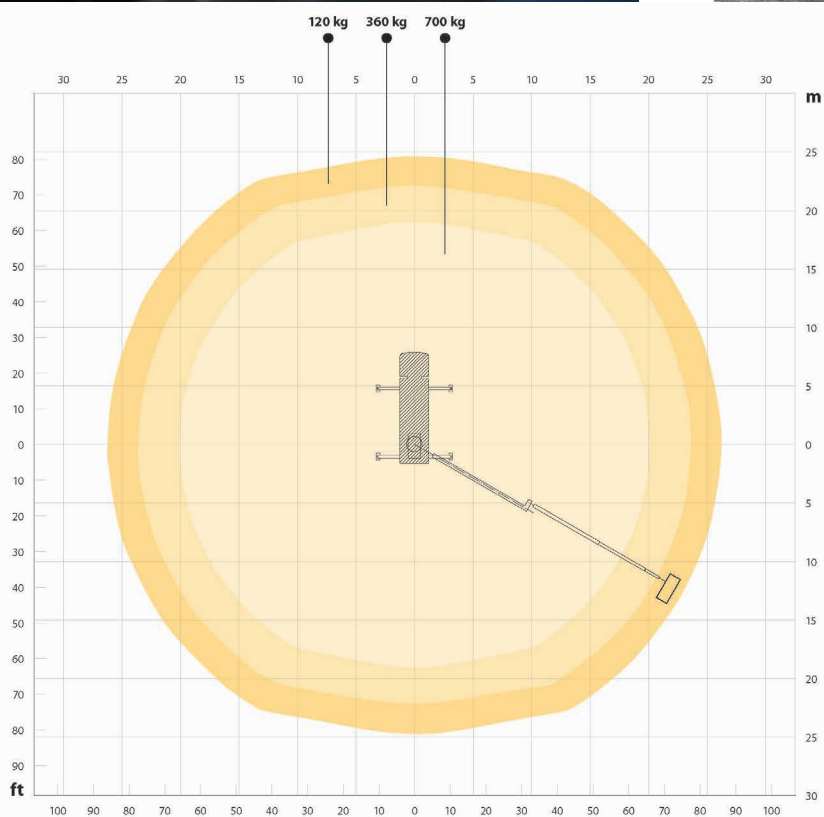
45 m



700 kg



1,1 x 2,4 m (3,7 m)



2 x 90°



2 x 280°



3,8 m*



10 m *

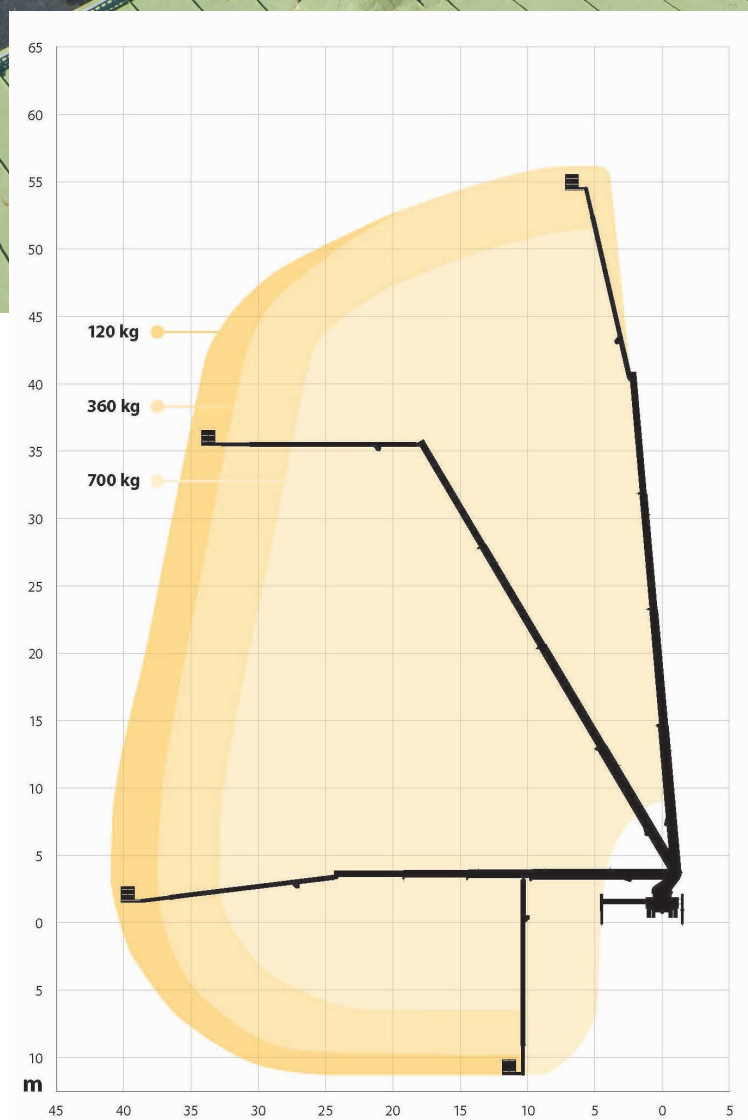
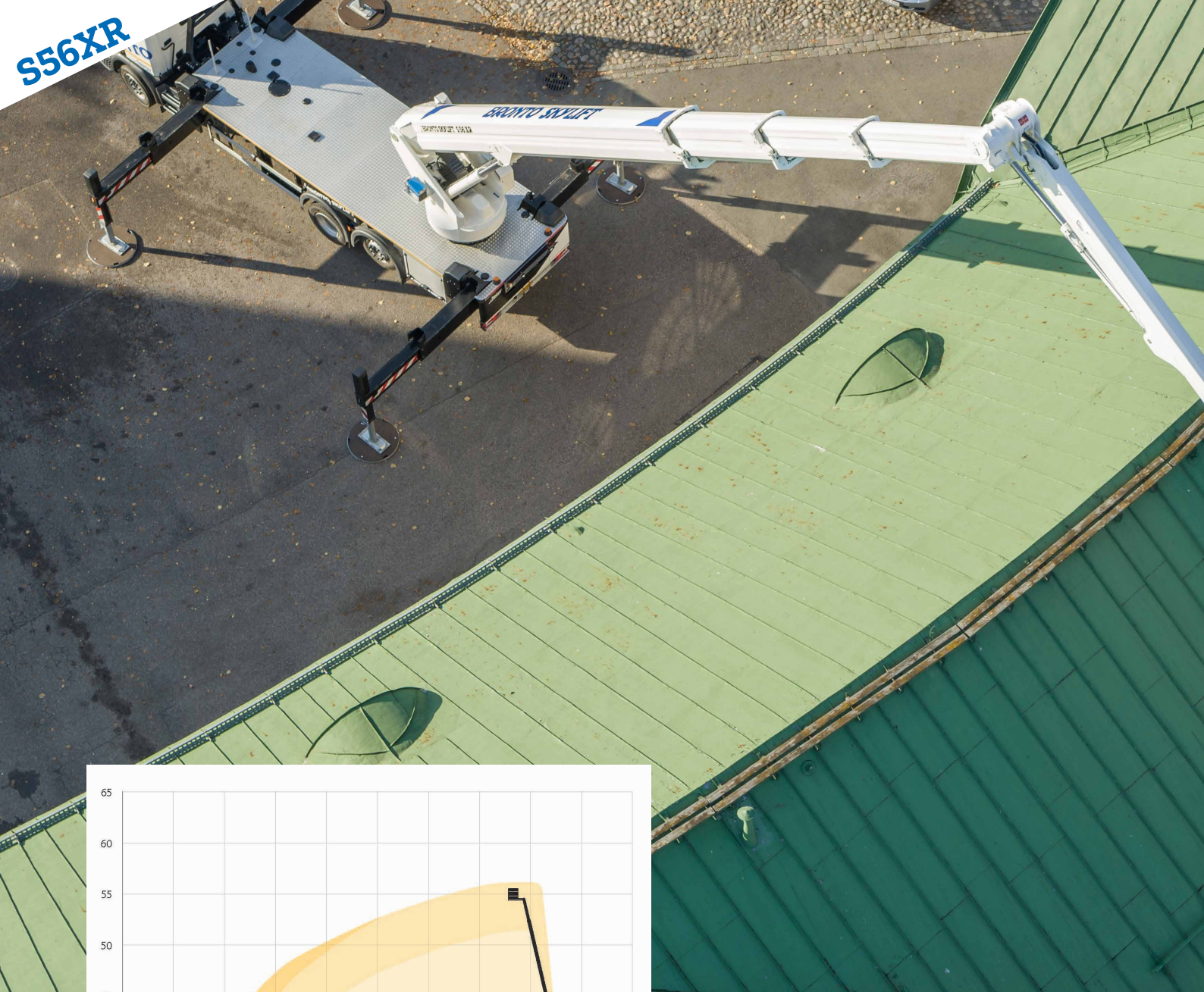


18 t *

Diagrams presented with standard cage. Variations apply.

* depending on chassis

S56XR



56 m



41 m



54 m



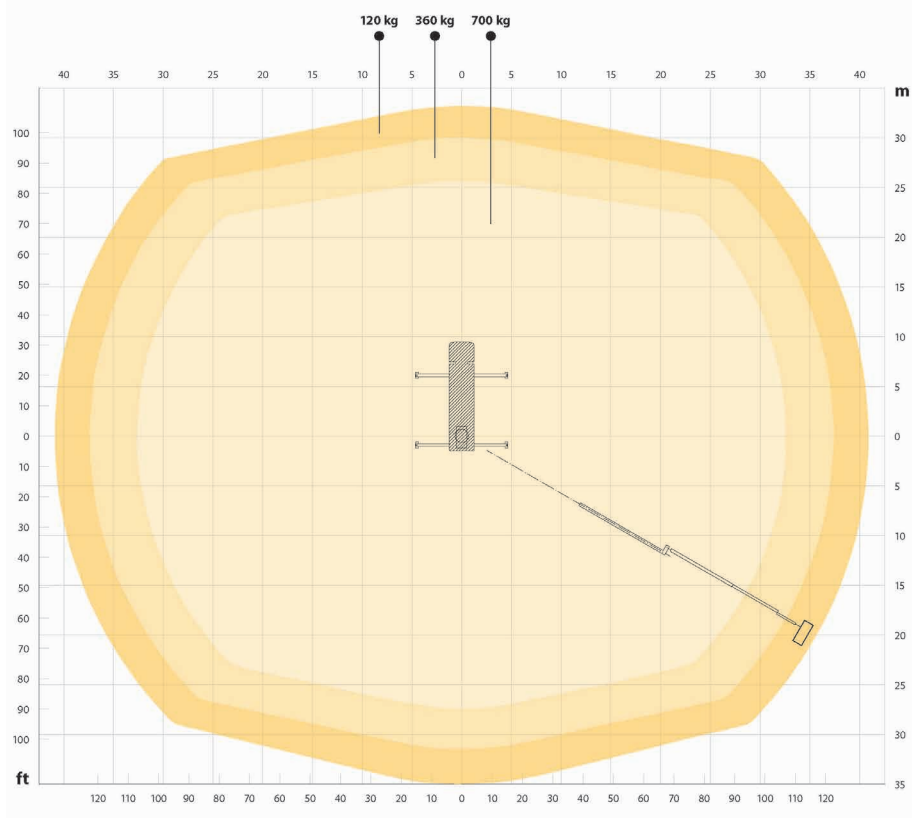
700 kg



1,1 x 2,4 m (3,7 m²)

Diagrams presented with standard cage. Variations apply.

* depending on chassis



2 x 90° (2x220°)



2 x 280°



3,8 * m



11,9 m *



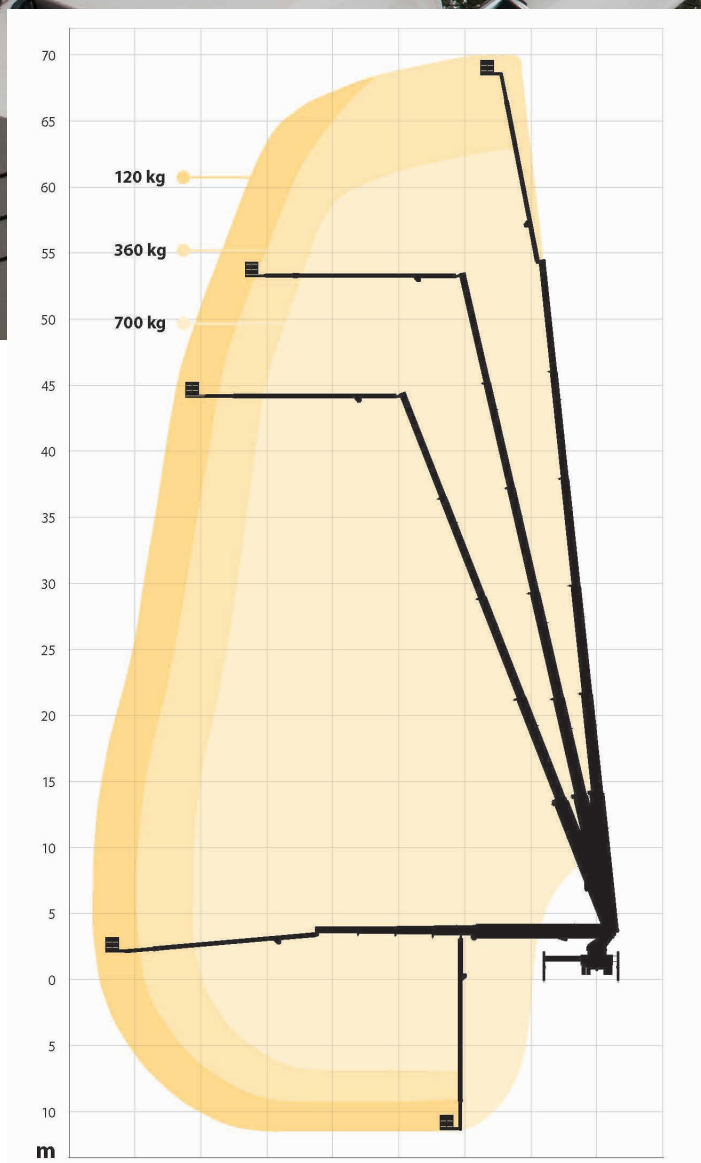
26 t

Diagrams presented with standard cage. Variations apply.

* depending on chassis

S70XR

BRONTO SKYLIFT® S 70 XR



Diagrams presented with standard cage. Variations apply.

* depending on chassis



70 m



38 m



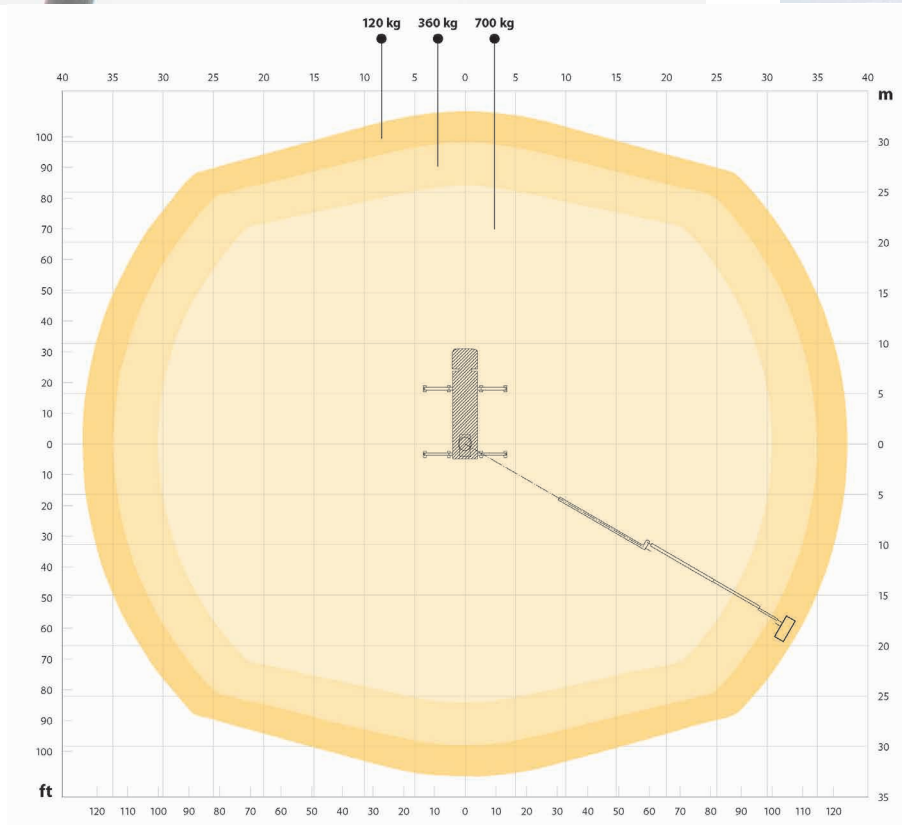
68 m



700 kg



1,1 x 2,4 m (3,7 m)



2 x 90° (2x220°)



2 x 280°



3.95 m *



12 m *



32 t *

Diagrams presented with standard cage. Variations apply.

* depending on chassis

Standard

Available

Not available

OPTIONS, SIMPLIFIED SELECTION	S XR	S XDT	S HLA	S EM
DECKING AND STEPS				
Aluminium sides on the decking				
Additional sidelights (Sidelights R48 ECE as std)				
Recessed foldable step, left/right				
Pull out step for rear of the platform, left/right				
Ladder type step with railings, left/right				
LOCKERS AND SIDEPANELS				
Complete locker for outrigger controls				
Tool box below decking				
Aluminum lockers with roller shutters				
Timber rack, mounted below decking				
GROUND PADS AND BRACKETS				
4 ground pads with aluminium brackets				
Conductive ground pads				
4 round ground pads insted of std pads				
JACKING SYSTEM				
Automatic, fully variable jacking				
Bronto Loadman for measuring the bearing capacity of ground				
Radio remote control for outriggers				
BACK-UP SYSTEMS FOR HYDRAULICS				
Petrol emergency back-up system by Kohler engine				
Petrol emergency back-up system by Kohler engine, electric start				
Diesel emergency back-up system by HATZ 1D81C silenced, electric start/stop				
Electric emergency back-up system by a battery pump				
Electric motor drive for the hydraulics				
MAIN DRIVE ENGINES				
Hydraulic pump driven by chassis' PTO				
Diesel engine HATZ 4H50TIC Semi-Silent				
POWER/AIR/WATER SUPPLY AND OUTLETS				
Electricity between turntable and cage, different voltages available				
Air/water supply between the turntable and cage				
Hydraulic outlets in the cage				
Hydraulic outlets and pressure intensifiers				
INTERCOM AND RADIO				
Intercom between the cage and ground control station				
GENERATORS				
Hydraulic generator with different power outputs				
CAGES AND ACCESSORIES				
Tree cutter fence for the cage				
Finger protection railing				
Ultra sonic collision guard with four sensors				
Cage rotation $\pm 220^\circ$ (S47XR only with std rotation $\pm 90^\circ$)				
Safety harness attachment points (4pc) according to EN795				
Working cage 1,05 x 2,4 x 1,1 m, SWL 700 kg				
Extendable working cage 1,05 x 2,4 (-3,7) x 1,1 m, SWL 600kg				
Rotating camera cage				
Extendable working cage 0,9 x 2,4 (-3,4) x 1,1 m, SWL 350kg				
Working cage 0,9 x 2,04 x 1,1 m, SWL 500 kg				
Wide working cage 0,9 x 2,40 x 1,1 m, SWL 450 kg				
Lighting rig, SWL 300 kg				
RF Antenna rig, width 5,7 m, SWL 50kg				
Cage floor heating				
Working cage extension module, 1,0 m, capacity 100kg				
MATERIAL HANDLING				
Detachable winch in the working cage, SWL 400 kg, 2 fold out feet for the load (200kg/each)				
Element lifting system, capacity 150 kg.				
Meat section lifter, capacity 150 kg				
Boom winch at the end of the 1st boom, SWL 1300 kg (hoist not included)				
Boom winch at the end of the 1st boom, SWL 1100 kg (hoist not included)				
Intelligent lifting eye mounted on to the last section of the main boom, max. load 2200 kg				
TURNTABLE CONTROL STATION				
Full lower control station at the turntable				
BRONTO+ CONTROL SYSTEM				
Engine information and warnings on display				
Telecontrol or Compass remote connection (for warranty period, optional after that)				
Memory function, height and outreach limitations and different user profiles				
Wireless remote control for boom movements				
Service counter and reminders				
Continuous rotation 360°				
High Voltage detector				
BEACONS AND LIGHTS				
Various LED warning beacons and flashing lights				
Various working lights 24V				
CHASSIS				
Reversing camera with 7" color display in the cabin				
Battery charger (DEFA) 2x20A, suitable for battery sizes up to 500Ah				
MISCELLANEOUS				
Safety Rail System, one rail on one side, without harness or self-retracting reel				



Added safety and efficiency

High safety does not decrease the efficiency, it does the opposite.

Control system for added safety and ease

Safety is about creating a safer working environment. An advanced control system increases the safety on your worksites by letting you focus on the job at hand.

The unit includes a 5th-generation Bronto+ control system that provides precise and stable movements. It has a resistive touch screen and is very simple and smooth to operate.

For added safety, the cage control centre has also a crushing hazard protection for the operator.

Easy and flexible user interface

Navigation through the control system has never been easier. The main menu has all the features and it can be modified by adding or removing icons much like in a smartphone.

Other features making day-to-day working easier include contextual help texts, integrated quick manuals, more detailed failure codes, simplified access to the cage load and easy control of the working lights.

Even the remote control has gone online and can now be equipped with an additional display with all the functions.





It's all about the uptime

With the Bronto Skylift service tools you can maximise your uptime and reduce maintenance cost.

We back you up

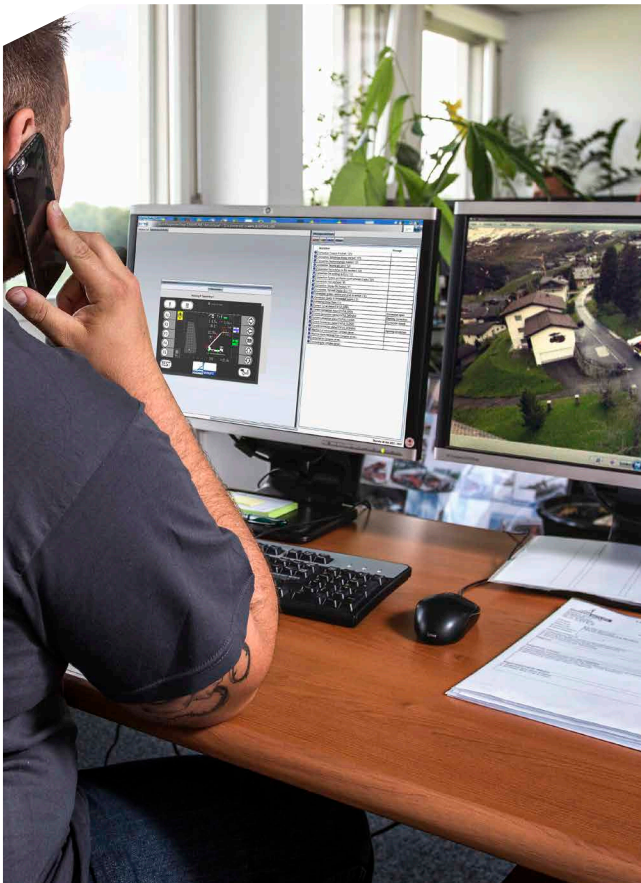
We want to keep your machines running with the best possible rate and keep their residual value. That's why we back you up from the first day through out the life cycle of your platform. When buying a new Bronto Skylift unit, you can trust that its spare parts are available for at least the next 25 years.

With the comprehensive training and service selection you can rest assured that your platforms are running at the best possible rate and keeping their residual value when it's time to renew your fleet. Widest service network in the industry keeps you backed up wherever you are.

Service agreements

With Bronto Service agreement, you can be assured that your Bronto equipment is kept in the best possible shape for its entire lifecycle. The content of our mutual agreement is fully customised according to your needs and wishes.

This covers the annual inspections and service visits, but it can also be expanded to include other services such as more detailed inspections, other maintenance activities, and spare parts.



Advanced IoT for steady performance

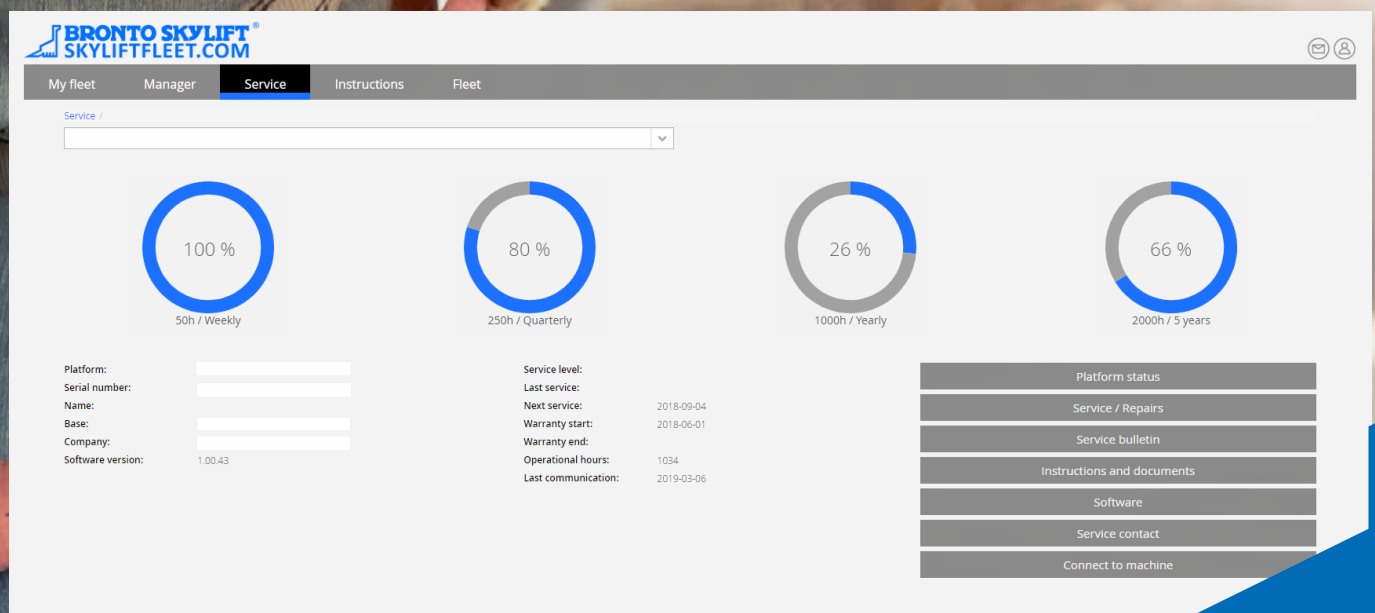
Connection between the platform and the database enables smooth, transparent communication.

Skyliftfleet - manage your platforms

Skyliftfleet is an online portal that analyses and visualises the platform's data into user-friendly format. You can easily check and optimise the platform's usage, performance and maintenance cycles. All important manuals, information and for example service bulletins are stored here for easy access. There are different sections for different needs and it's possible to select different views for different people or organisations..

Bronto Compass

Bronto Skylift Service personnel can open a remote connection to the platform with Bronto Compass. It enables real time communication with the machine for various settings, calibration, analysing and fault finding. With this tool, faults and their causes can be rapidly identified, analysed and corrected, which reduces downtime and unnecessary costs.





Bronto Skylift is a trusted global supplier of truck-mounted hydraulic platforms. We design, manufacture, sell and service appliances for rescue and firefighting as well as for industrial access.

Our product range includes approximately 50 models with a range of 17 to 112 metres of working height. The advanced modularity also allows for numerous client-specific modifications. During the past 50 years, we have delivered over 7,000 platform units to fire brigades and industrial customers throughout all the continents in more than 120 countries.

Our headquarters and production plants are situated in Finland. We also have subsidiaries in Germany, Sweden, Switzerland and the US. The company is part of the Japan-based Morita Holdings Corporation.

sales@brontoskylift.com

Technical data and illustrations subject to change without notice.

www.brontoskylift.com