

Meet

DINO 120TN

DINO® TRAILER MOUNTED MEWPs

Standard features in DINO 120TN:

- Special axle and outriggers; easy and fast to make narrow
- Min. width only 90 cm
- Stable to tow; transport width 1.53 m
- Powerful driving system, easy to move at worksite
- Suitable for indoor and outdoor applications
- 1-person steel basket, capacity 120 kg
- Compact; transport length only 5.5 m
- Simple, easy to use and maintain

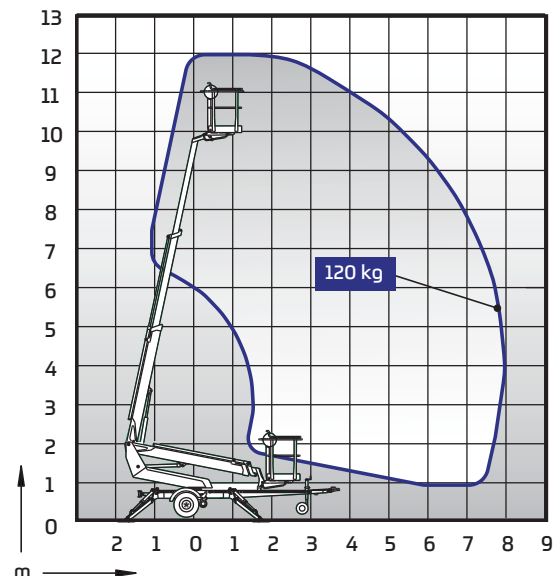
Options available for DINO 120TN:

- Petrol power pack
- Outrigger support indicator
- LED working lights
- DINO SafeGuard secondary guarding
- Extra outrigger pads 500 x 500 x 35 mm + bracket



Technical data

	Metric
Max. working height	12.00 m
Max. platform height	10.00 m
Max. outreach	7.90 m
Support width	3.15 / 3.55 m
Lifting capacity	120 kg
Basket size	0.75 x 0.80 m
Boom rotation	cont.
Boom control	2-speed
Transport length	5.52 m
Transport width	1.53 m
Min. width	0.90 m
Transport height	2.05 m
Weight	1355 kg
Driving system	std
AC socket in the basket x 2	std
Electro motor	std
Gradeability	25 %



DINOLIFT

UP TO THE JOB

DINOLIFT Oy | Raikkolantie 145 • FI-32210 LOIMAA, FINLAND

Tel: +358 (0)20 1772 400 • E-mail: info@dinolift.com

Read more: www.dinolift.com

Technical specifications are subject to change without prior notice.

©Dinolift Oy | 16.8.2017