

Model HC3 460SJ

TELESCOPIC BOOM LIFTS



HIGHER CAPACITY

- Lift more with new capacity - 300 kg unrestricted up to 454 kg restricted.

BETTER OUTREACH

- 3 working zones- be more flexible working safely at height with one machine.

MORE EFFICIENCY

- 3 people allowed into the basket at the same time.
- Load sensing system calibration - no weights needed.
- Chassis tilt indicator of 5° with light alarm.
- Automatic selection of the capacity zone base on the load in the basket.

SMART DESIGN

- New light panel - information clearly visible.
- New hose and cable routing- closed under protective cover.



Standard Features

- Full proportional drive joystick control with integral thumb steer switch
- Full proportional main boom and swing joystick control
- Multiple speed control for telescope and platform rotate
- Selectable creep speed on drive / lift and swing functions
- Platform console machine status light panel *
- Load sensing system
- Engine distress warning/shut down system **
- Dura Tough turntable hoods
- Swing-out engine tray
- Spark arresting type muffler
- Control ADE® - Advanced Design Electronics System
- Hydrostatic drive transmission
- Four wheel drive
- Horn
- 5 degree tilt alarm and indicator light
- Oscillating front axle
- Lifting/tie down lugs
- Hour meter
- Ground control selector switch with key lock
- Platform tool tray

Standard Specifications

- Diesel Engine 36.4 kW Deutz D2.9 L4
- Fuel Tank Capacity 83.28 L
- Hydraulic System 136.28 L
- Auxiliary Power 12V DC
- Tyres 14 x 17.5 (Foam Filled) / 33 x 1 2 D610 (Foam Filled) / 14 x 17.5 Non- marking

Accessories & Options

- 0.91 m x 1.83 m low mount platform
- 0.91 m x 2.44 m low mount platform
- 0.76 m x 1.52 m swing gate or drop bar platform
- 0.91 m x 1.83 m swing gate or drop bar platform
- 0.91 m x 2.44 m swing gate or drop bar platform
- Tri entry 0.91 m x 1.83 m swing gate or drop bar platform
- Tri entry 0.91 m x 2.44 m swing gate or drop bar platform
- AC cable to platform
- 13 mm air line to platform
- On-board 4,000 W generator
- SkyPower® package 7,500 watt on-board generator
- SkyWelder® package 250 amp welder in the platform ***
- Nite-Bright® package ****
- Tow Package
- All motion alarm
- Light package *****
- Platform worklights
- Head and tail lights
- Flashing amber beacon
- Plugs & Sockets
- Hostile environment package *****
- Hydraulic oil cooler
- Catalytic Purifier Muffler
- Skyguard with beacon
- Skyguard without beacon
- Corner storage tray
- 12V DC auxiliary power

* Provides indicator lights at platform control console for system distress, low fuel, tilt light, and foot switch status.

** Low oil pressure and high coolant temperature alarms with shut-down enabled/disabled by analyser.

*** Available when integrated with the SkyPower® package.

**** Consists of six 40-watt lights, four turntable mounted lights and two platform mounted lights.

***** Includes platform mounted work lights and head & tail lights.

***** Includes console cover, boom wipers and cylinder bellows.

Model HC3 460SJ

TELESCOPIC BOOM LIFTS

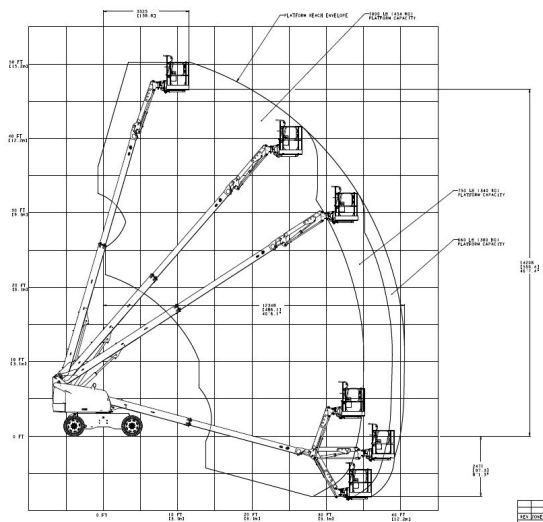
Performance

• Working Height	16.04 m
• Platform Height	14.04 m
• Horizontal Outreach	12.18 m
• Working Outreach**	12.83 m
• Swing continuous	360°
• Platform Capacity – Unrestricted	👤👤👤 / 300 kg
• Platform Capacity – Restricted	👤👤👤 / 340 kg 👤👤👤 / 454 kg
• Platform Rotator	180°
• Jib – Overall Length	1.83 m
• Jib - Range of articulation	131°
A. Platform Size	0.91 m x 2.44 m
B. Overall Width	2.3 m
C. Tailswing (working condition)	0.93 m
D. Stowed Height	2.45 m
E. Stowed Length	9.1 m
F. Wheelbase	2.38 m
G. Ground Clearance	0.30 m
• Machine weight*	8,736 kg
• Maximum Ground Bearing Pressure	569 kPa
• Maximum Tyre Load	4,808 kg
• Drive Speed 4WD	6.84 km/h
• Gradeability 4WD	45%
• Axle Oscillation (Optional)	0.11 m
• Turning Radius - Inside	2.42 m 4WS
• Turning Radius - Outside	5.16 m 4WS

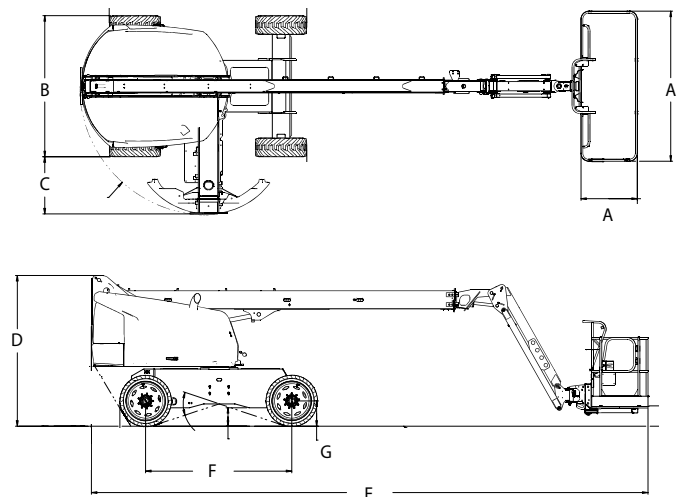


* Certain options or country standards may increase weight and/or dimensions.
** Incl. 0.65 m outreach beyond platform

Reach Diagram



Dimensions



IMPORTANT

JLG is continually researching and developing products and reserves the right to make modifications without prior notice. All data in this document is indicative. Certain options or country standards will increase weight. Specifications may change to meet country standards or with the addition of optional equipment.

Due to continuous product improvements, JLG Industries reserves the right to make specification and/or equipment changes without prior notification.



JLG EMEA BV

Polaris Avenue 63
2132 JH Hoofddorp
The Netherlands
Phone: +31 (0)23 565 5665
www.jlg.com

An Oshkosh Corporation Company