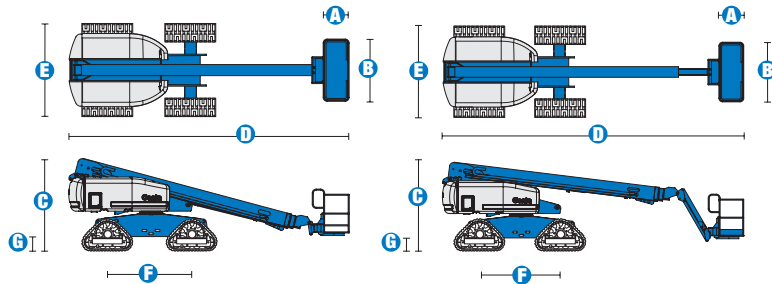
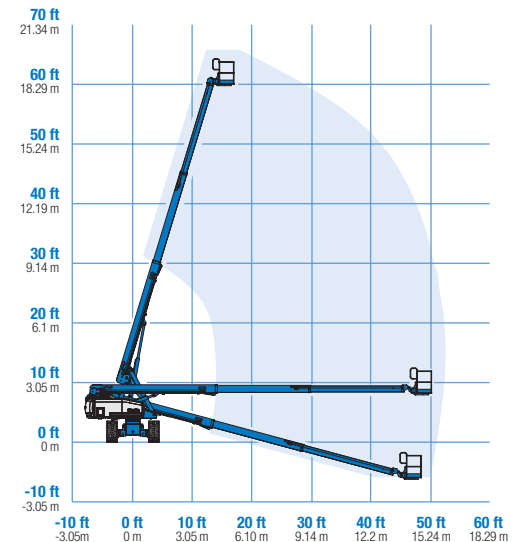
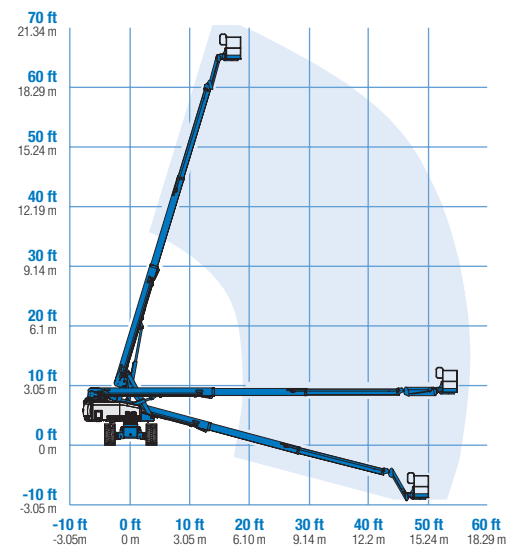


Specifications



MODELS		S™-60 Trax		S™-65 Trax	
MEASUREMENTS		Metric		US	
Working height maximum*		20.34 m		66 ft 2 in	
Platform height maximum		18.34 m		60 ft 2 in	
Horizontal reach maximum		15.48 m		50 ft 10 in	
Below ground reach		1.65 m		5 ft 5 in	
A Platform length - 8 ft model		91 cm		3 ft	
Platform length - 6 ft model		76 cm		2 ft 6 in	
B Platform width - 8 ft model		2.44 m		8 ft	
Platform width - 6 ft model		1.83 m		6 ft	
C Height - stowed		2.77 m		9 ft 1 in	
D Length - stowed		8.51 m		27 ft 11 in	
Length - transport (jib tucked under)		————		7.60 m	
E Width		2.59 m		8 ft 6 in	
F Wheelbase		2.50 m		8 ft 2.5 in	
G Ground clearance - centre		43 cm		1 ft 5 in	
PRODUCTIVITY					
Lift capacity		227 kg		500 lbs	
Platform rotation		160°		160°	
Vertical jib rotation		————		135°	
Turntable rotation		360° continuous		360° continuous	
Turntable tailswing		1.22 m		4 ft	
Drive speed - 4WD stowed		3.7 km/h		2.3 mph	
Drive speed - raised or extended		1.1 km/h		0.68 mph	
Gradeability - 4WD - stowed**		45%		45%	
Controls		12 V DC proportional12 V DC proportional			
Track system - 4 point		Loegering QTS-R42Loegering QTS-R42			
POWER					
Power source		Ford DSG-423 4 cylinder petrol/LPG 75 hp (56 kW) Deutz D2011L03i 3 cylinder diesel 46 hp (34.3 kW) Perkins 404D-22 4 cylinder diesel 51 hp (38 kW)			
Auxiliary power unit		12 V DC		12 V DC	
Hydraulic tank capacity		170 L		45 gal	
Fuel tank capacity		132 L		35 gal	
WEIGHT***					
4WD		11,512 kg		25,380 lbs	
Ground pressure		9.2 psi		9.7 psi	

STANDARDS COMPLIANCE CE EN280

RANGE OF MOTION S™-60 Trax

RANGE OF MOTION S™-65 Trax


* The metric equivalent of working height adds 2 m to platform height. U.S. adds 6 ft to platform height.

** Gradeability applies to driving on slopes, see operator's manual for details regarding slope ratings.

*** Weight will vary depending on options and/or country standards.

Features

EASILY CONFIGURED TO MEET YOUR NEEDS

PLATFORM OPTIONS

- Steel 2.44 m (8 ft) (standard)
- Steel 1.83 m (6 ft)
- Steel 2.44 m (8 ft) tri-entry

JIB OPTIONS

- Non-jib
- 1.52 m (5 ft) jib boom

POWER OPTIONS

- Ford petrol/LPG 75 hp (56 kW)
- Deutz diesel 46 hp (34.3 kW)
- Perkins diesel 51 hp (38 kW)

DRIVE

- 4WD

AXLE

- Active oscillation

TRACK

- Track system QTS-R42

STANDARD FEATURES

MEASUREMENTS

S™-60 Trax

- 20.34 m (66 ft 2 in) working height
- 15.48 m (50 ft 10 in) horizontal reach
- Up to 227 kg (500 lb) lift capacity

S™-65 Trax

- 21.86 m (71 ft 2 in) working height
- 17.10 m (56 ft 2 in) horizontal reach
- Up to 227 kg (500 lb) lift capacity

PRODUCTIVITY

- Self-leveling platform
- Hydraulic platform rotation
- Fully proportional Hall effect joystick controls
- Fuel select switch on platform and ground control panels (Petrol/LPG models)
- Drive enable
- AC power cord to platform
- Tilt alarm
- Descent alarm
- Hour meter
- Horn
- 360° continuous turntable rotation
- Positive traction drive

STANDARD FEATURES cont.

- Two speed wheel motors
- Thumb rocker steer
- Certified load sensor

POWER

- All engines are emissions compliant
- 12 V DC auxiliary power
- Anti-restart engine protection
- Auto engine fault shutdown
- Swing out engine tray
- Deutz intake air heater



OPTIONS & ACCESSORIES

PRODUCTIVITY

- 340 kg (750 lbs) capacity (S™-60 Trax only)
- Platform swing gate
- Half-mesh platform inserts with swing gate
- Platform top auxiliary rail
- Weld leads to platform
- Air line to platform
- Hydraulic oil cooler
- Fire resistant hydraulic oil
- Biodegradable hydraulic oil
- Basic hostile environment kit
- Deluxe hostile environment kit
- Tool tray
- Pipe cradle (pair)
- Alarm package
- Platform work lights
- Front driving lights
- Lockable platform control box covers
- Second battery

POWER

- Engine gauge package
- AC generator packages (110V/60Hz, 3000W or 220V/50Hz, 2500W)
- Cold Weather Packages
- Arctic Packages
- Diesel scrubber/spark arrestor muffler
- Diesel spark arrestor muffler
- LPG tank 15.19 kg (33.5 lb) capacity
- Air precleaner

UK

Millennium House
Brunel Drive
Newark NG24 2DE
UK
Tel: +44 (0)1476 584333
Fax: +44 (0)1476 584334

France

10, ZA de la Croix St. Mathieu
28320 Gallardon
France
Tel: +33 (0)2 37 26 09 99
Fax: +33 (0)2 37 26 09 98

Germany

Finienweg 3
28832 Achim/Bremen
Germany
Tel: +49 (0)4202 8852-0
Fax: +49 (0)4202 8852-25

Spain

Gaia 31, Pol. Ind. Plá d'en Coll
08110 Montcada i Reixac
Barcelona
Spain
Tel: +34 93 572 50 90
Fax: +34 93 572 50 91

Scandinavia

Importgatan 17
422 46 Hisings Backa
Sweden
Tel: +46 31 57 51 00
Fax: +46 31 57 90 20

Middle East

Terex Middle East
PO Box 282325, Dubai
U.A.E.
Tel: +971 4 339 1800
Fax: +971 4 339 1802
Email: InfoME@terex.com

Genie United States

18340 NE 76th Street
P.O. Box 97030
Redmond, WA
USA 98073-9730
Tel: +1 425 881-1800
Fax: +1 425 883-3475

Email: AWP-InfoEurope@terex.com

Distributed By: