

MACHINE MODEL	Rotating telescopic handler	RTH 5.25 SH	
	Maximum lifting capacity	4.999 kg (center of gravity 500 mm)	
	Maximum lifting height	25,00 m	
ENGINE - DEUTZ	Type	Deutz TCD 3.6 L4 Stage IV	Deutz TCD 3.6 L4 EDG - stage 3A compliant
	Rated power	100 kW - 134 HP at 2.200 rpm	100 kW - 134 HP at 2.200 rpm
	Maximum torque	500 Nm at 1.600 rpm	500 Nm at 1.600 rpm
	Displacement	3,6 l	3,6 l
	Cylinders	4 in line	4 in line
	Fuel	Diesel direct injection turbocharged	Diesel direct injection turbocharged
	Cooling system	Water – intercooler	Water – intercooler
TRANSMISSION	Type	Hydrostatic	
	Model	Bosch – Rexroth	
	Maximum pressure	500 bar	
	Displacements	Variable displacement pump electronically controlled Variable displacement motor	
	Gear box	2 speeds forward-reverse	
AXLES AND BRAKES	Type	Axles with epicyclic reduction gear	
	Rear axle	Oscillating and steering with hydraulic locking	
	Front axle	Oscillating and steering with automatic levelling +/- 10°	
	Service brake	Hydraulically activated, oil-immersed multi-disc type on each axle	
	Parking brake	Hydraulic with negative action	
	Tyres dimensions	445/65 R 22,5	
PERFORMANCE	Max. travel speed	40 km/h	
	Drawbar pull	66 kN	
	Gradeability	41%	
	Turning radius (end of forks)	6.390 mm	
WEIGHTS	Total unladen	18.000 kg	
	Front axle unladen (boom retracted and lowered)	8.100 kg	
	Rear axle unladen (boom retracted and lowered)	9.900 kg	
TANK CAPACITIES		Deutz stage IV	Deutz stage 3A
	Fuel tank	180 l	180 l
	AdBlue	10 l	n.a.
	Hydraulic oil tank	190 l	190 l
	Engine oil tank	8 l	8 l
HYDRAULIC CIRCUIT	Max. operating system pressure	350 bar	
	Circuit type	Load sensing	
	Service pump	Bosch Rexroth – Variable displacement	
	Controls for boom and turret movements	Danfoss – Electroproportional valve SIL 2	
	Controls for stabilizers	Bosch Rexroth – Electro-hydraulics controls	
	Movements control	2 joystick Danfoss with two shafts with dead man safety device - Management with CAN bus technology	
CONFORMY TO STANDARDS	EN 13849: concerning the safety of all controls of the machine EN 13000: concerning the standard of hydraulic cranes EN 280: concerning the standard of aerial platforms FOPS/ROPS 97/68/CE: concerning engine emissions standards EN1459-2		

Gruppo Industriale FG - 17C0510

The data in this brochure are informative and subject to change without notice

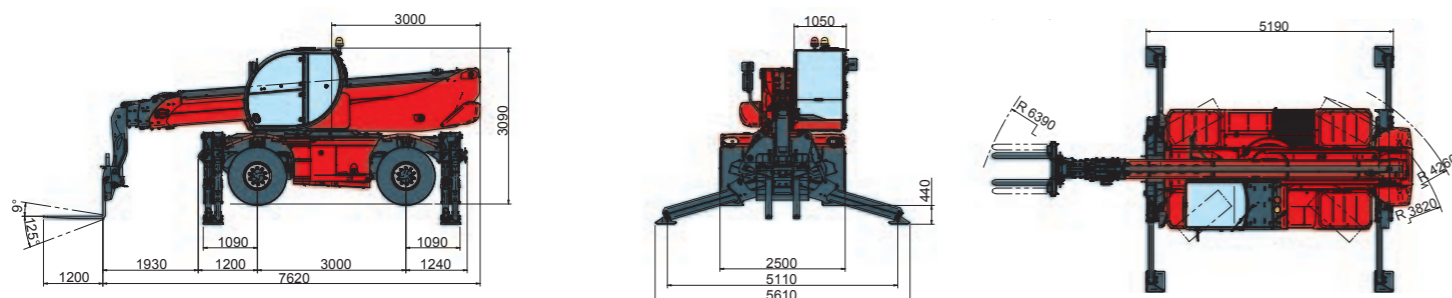


Maximum lifting height: 25,00 m
 Maximum reach: 21,20 m
 Electronically controlled hydrostatic transmission
 Automatic levelling device
 Scissors stabilizers



RTH5.25 SH

REV07

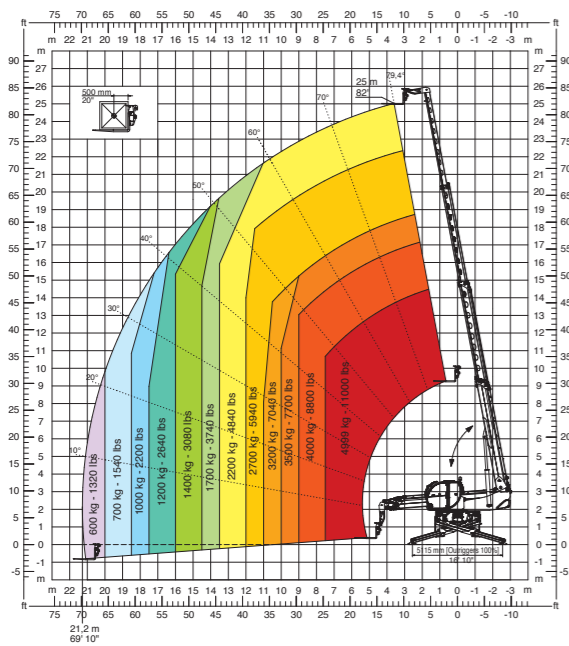


Magni Telescopic Handlers srl

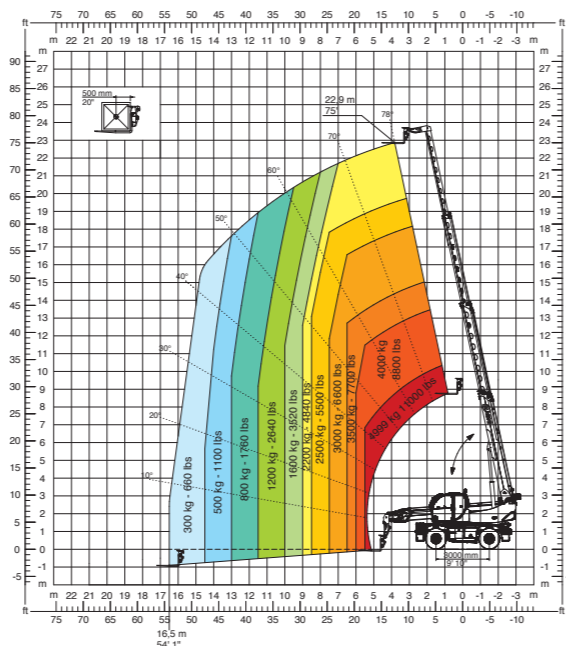
Via Magellano, 22 - 41013 Castelfranco Emilia, Modena, Italia - Tel: +39 059 8630811 - Fax: +39 059 8638012

commerciale@magnith.com - www.magnith.com

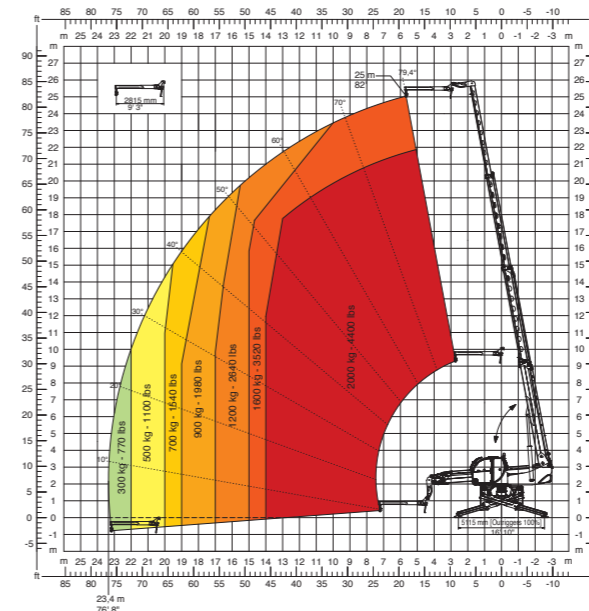
360° fully extended stabilizers load chart with forks



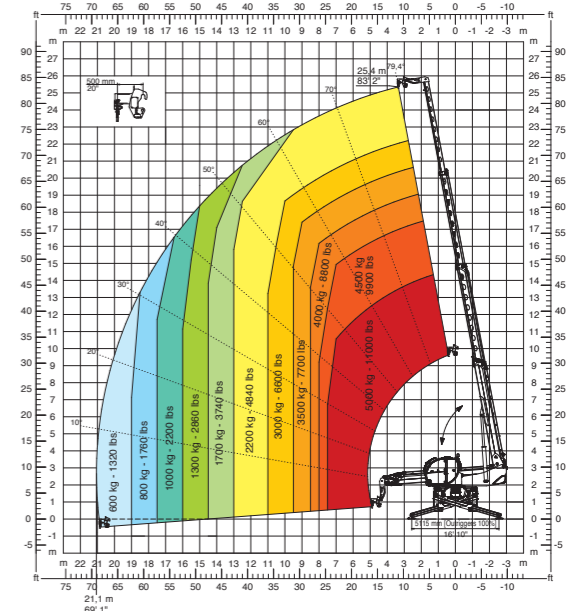
Frontal position load chart on tyres with forks



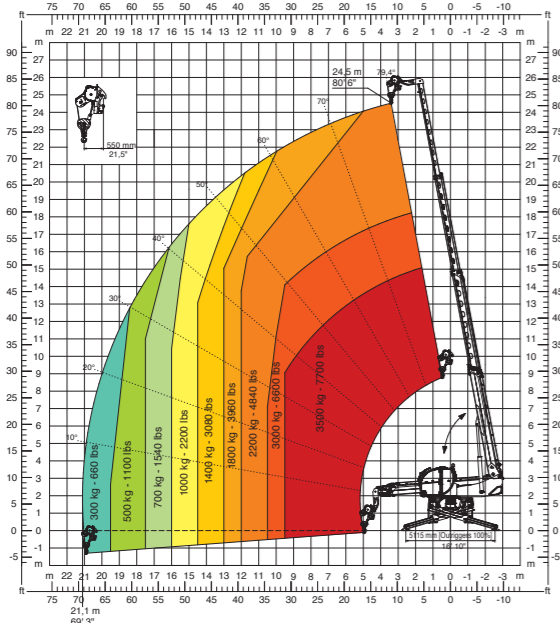
J 2000
Jib 2.000 kg



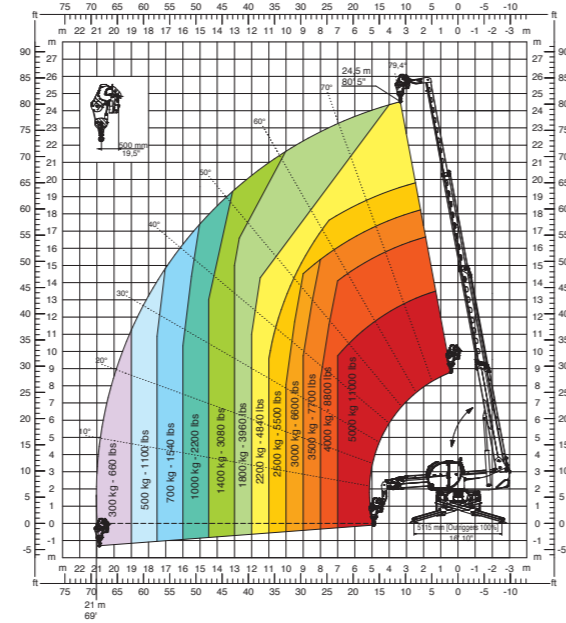
H 5
Hook 5 t



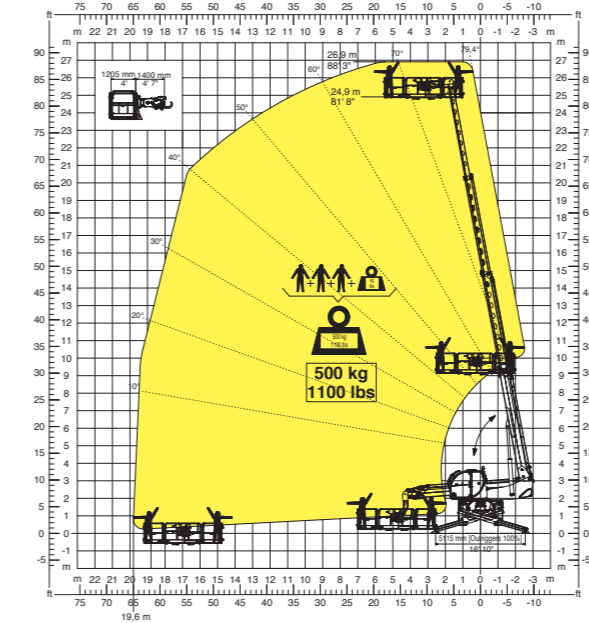
W 3,5
Winch 3,5 t



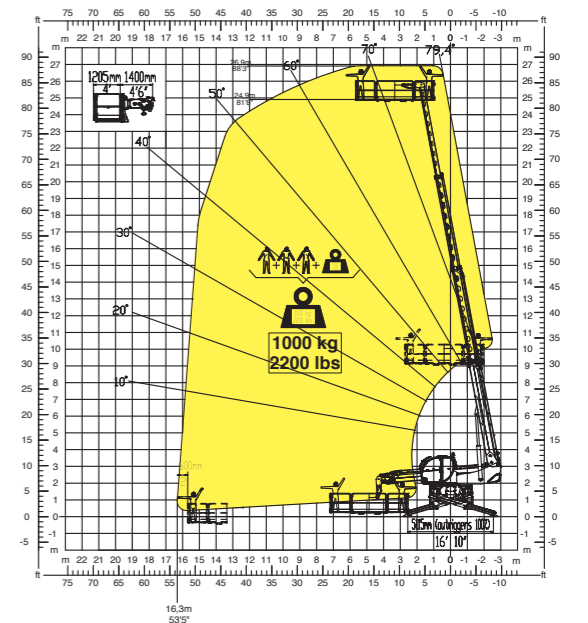
W 5
Winch 5 t



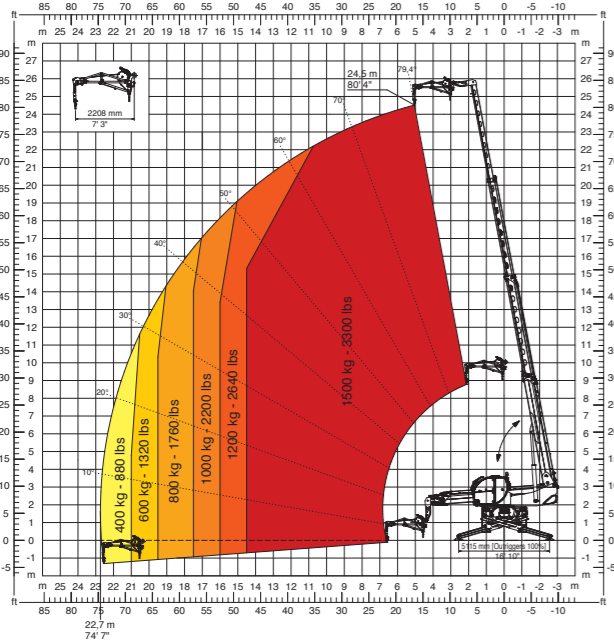
REP 2-4,5
Rotating extendable man platform 500 kg



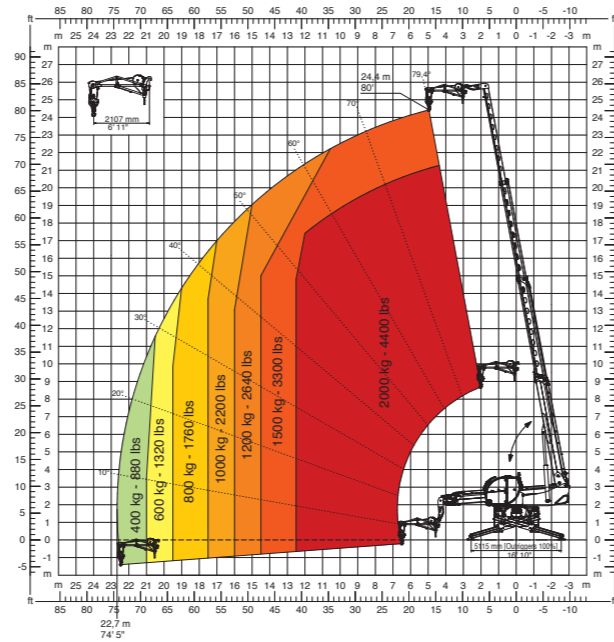
REP 10.2-4,7
Rotating extendable man platform 1.000 kg



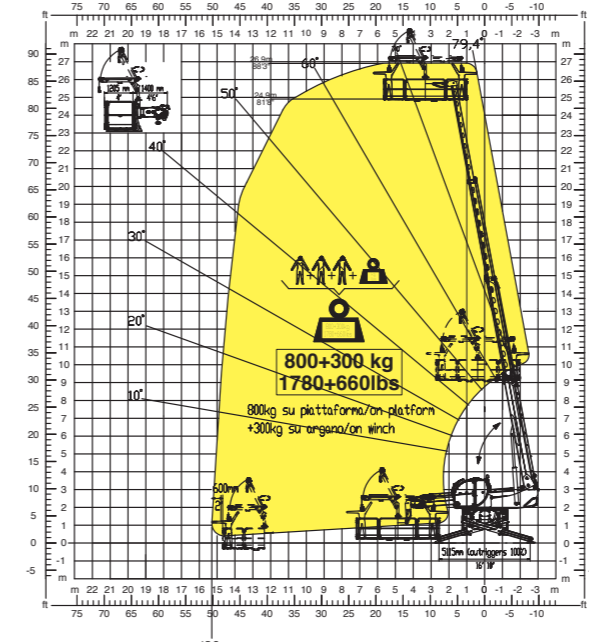
JW 1500
Jib winch 1.500 kg



JW 2000
Jib winch 2.000 kg



REP 8,2-4,7 W0,3
Rotating platform 800 kg with winch 300 kg



REP 2-2
Rotating fixed platform 500 kg

